



AVIDBEAM TECHNOLOGIES

Industrial Zones Solutions

Video analytics can be used to address various challenges facing the oil & gas sector by providing real-time insights into critical business operations. AvidBeam software modules automatically analyzes video surveillance live streams to extract wealthy useful business, security, and safety intelligence information

Industrial Zones

AvidBeam Solutions, help industrial zones to operate more efficiently, improve safety and security. An essential solution for industrial zones is Personal Protective Equipment detection, it reduces risks of injuries therefore improving workers' injuries, reduce lost work time, and increase productivity.



Ease of
Integration



Cost
Saving



Customer
Centric



Scalability &
Flexibility



Efficiency
Optimization

Sector Challenges

- | | |
|---------------------|-------------------------|
| ✓ Improved Safety | ✓ Increased Efficiency |
| ✓ Enhanced Security | ✓ Regulatory Compliance |
| ✓ Enhanced Security | ✓ Regulatory Compliance |

AvidBeam Solutions Can Help You Transform Industrial Zones Operations, Safety and Security Challenges



SAFETY & SECURITY

- Face Recognition
- Early Warning System
- Fast Forensic Search
- Video Summarization
- Regulatory Compliance
- Identify Deny List Individuals
- Trace Suspects
- Reverse Image Search



OPERATIONS SOLUTIONS

- Missing PPE Detection
- No Mask Detection
- Intrusion Detection
- Loitering Detection
- Face Recognition
- Employee Tracking



PERIMETER SOLUTIONS

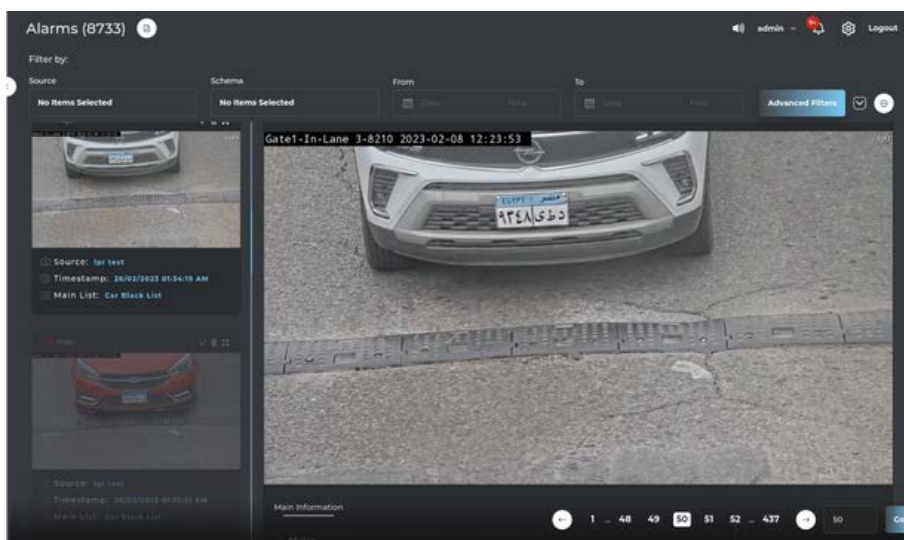
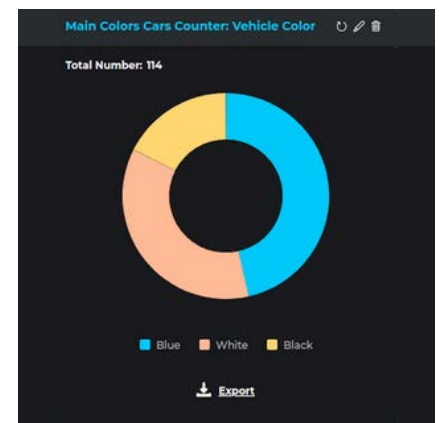
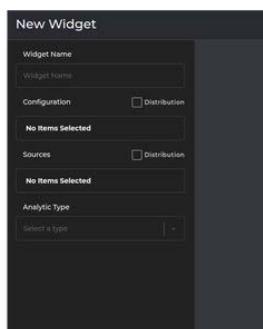
- Fence Crossing Detection
- Left Object Detection
- Loitering Detection
- Intrusion Detection
- Illegal Parking



PARKING & ACCESSIBILITY

- LPR on Gates
- Automate Vehicle Recording Process
- Vehicle Flow Detection
- Vehicle Watchlist
- Vehicle Tracking
- Vehicle Count

AvidBeam's Comprehensive Dashboard



Comprehensive View

Customizable Layout

Custom Queries

Custom Reports

Fast Advanced Search

Custom Widgets

AVIDBEAM TECHNOLOGIES



AvidBeam® is an AI video analytics company that pushes the boundaries of video processing capabilities with big data distributed architecture. Its expertise in computer vision, deep learning, visualization and neural networks enable AvidBeam® to offer scalable video analytics solutions for security, safety and business intelligence applications to its customers. AvidBeam team delivers video processing and analytics products cutting across various verticals and geographies including Smart Cities, Smart Retail, Transportation, Oil & Gas, Healthcare, Education, etc in the Middle East, Gulf and North America. Headquartered in the Netherlands with teams in the US, Egypt and Saudi Arabia



www.avidbeam.com
info@avidbeam.com