



# AvidGuard

Your Vigilant Guard

# AvidGuard

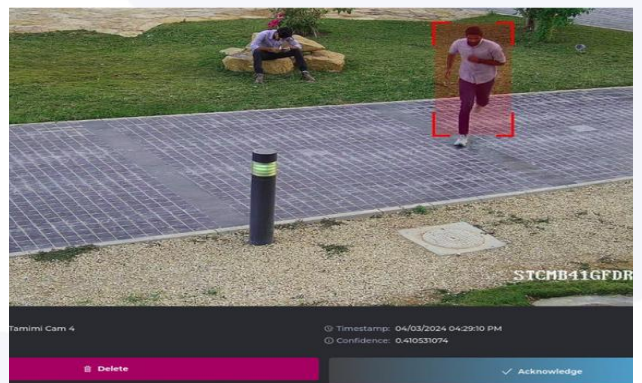
Offers early warning detections that enhance security, safety, and compliance by identifying intrusions, hazards, anomalous behavior, and regulatory violations.

## AB - Safety & Security Detections

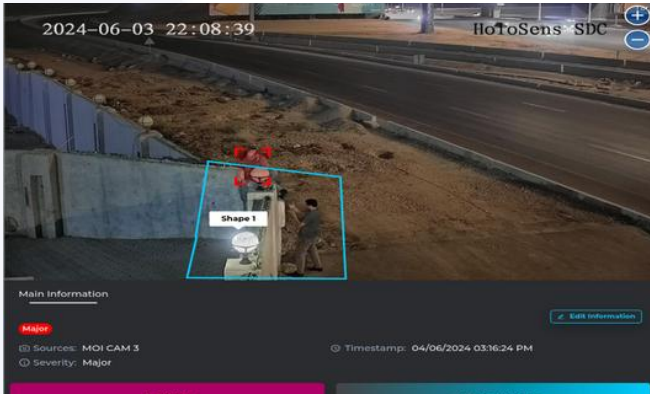
- ✓ Intrusion Detection
- ✓ Loitering Detection
- ✓ Anomaly Detection
- ✓ Crowd Detection
- ✓ Left Object Detection
- ✓ Fire & Smoke Detection
- ✓ Tailgating Detection
- ✓ Scene Change Detection
- ✓ Weapon Detection
- ✓ Object Search

## AB - Health, Safety & Environment Compliance

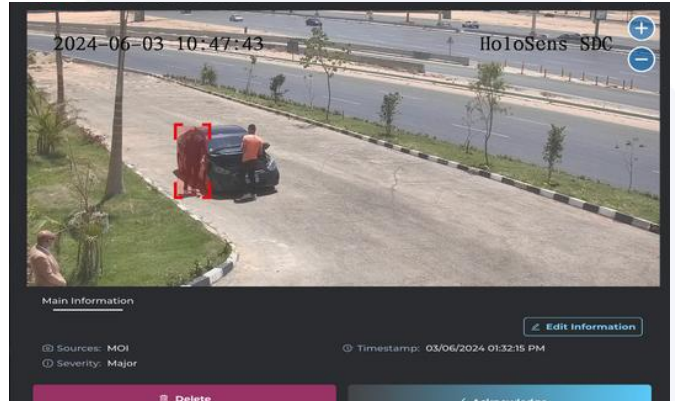
- ✓ Personal Protective Equipment
- ✓ Mask and Hair Cover Detection
- ✓ Mobile Phone Detection



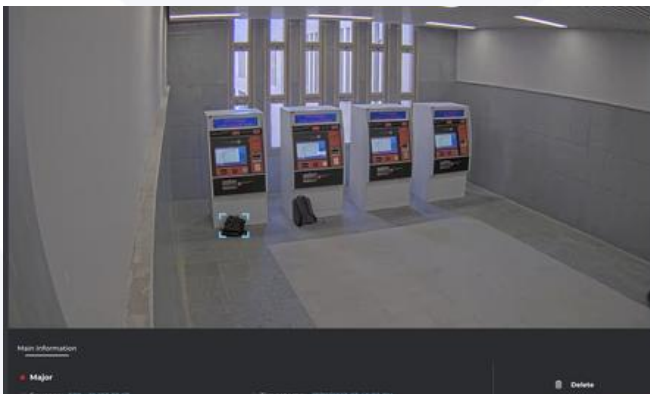
## Safety & Security Detections



✓ Intrusion / Fence Crossing Detection



✓ Loitering Detection



✓ Left Object Detection

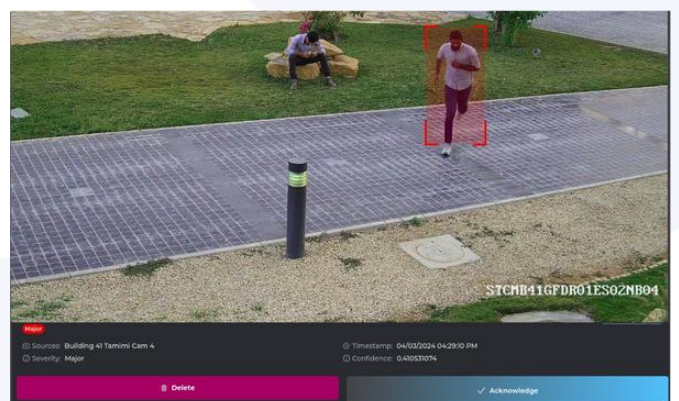


✓ Smoke & Fire Detection

## Anomaly Detections



✓ Detect Person Falling



✓ Detect Running Person

# Why AvidBeam Video Analytics



## One-stop Shop

Provides full video analytics portfolio for safety, security, intelligence.



## Scalability

Synthesizes big data analytics supporting accurate real-time video surveillance.



## Ease of Integration

Integrates with IoT platforms generating actionable data for decision making.



## Flexibility

Provides diversified access locally or remotely via cloud solutions.



## Professional Expertise

Team of professionals with extensive technical and business experience.



## Customer Centric

Provides real-time analytics customized to each application need.

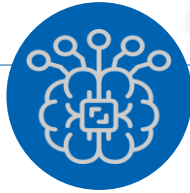


# Our Dashboard – Competitive Edge



## All-in-one

Manage video insights across facilities or cities using charts, reports, maps.



## GenAI-enabled

Leverage GenAI through intuitive natural language interactions for seamless use.



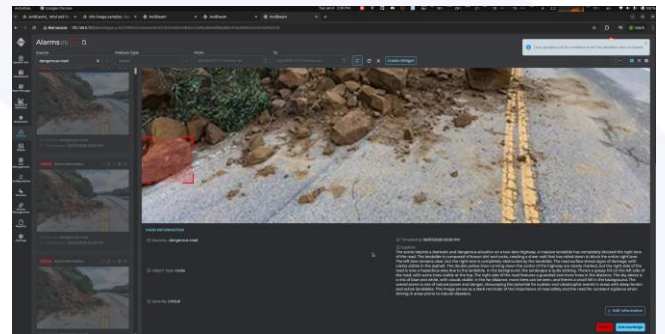
## Intuitive

Experience user-friendly UI featuring reports, charts, widgets, and dashboards

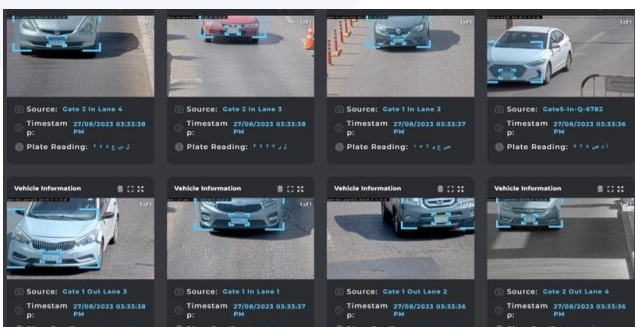
## Dashboard Sample View



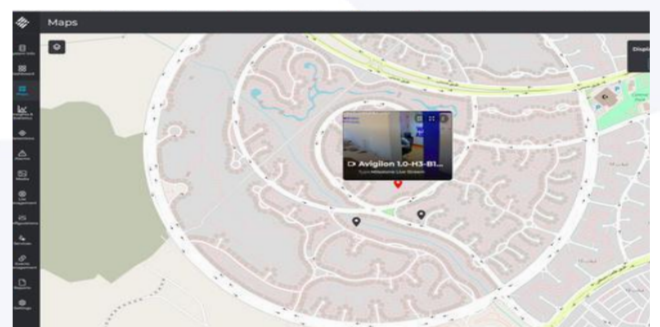
Live Dashboard View



VLM Alerts & Detections



VLM Alerts & Detections



Map View

# General Technical Requirements

## General System Specifications

- ✓ Integrated with different VMS (Milestone, Genetec) or deployed as a separate stand-alone application.
- ✓ Could be run On Premise, Private Cloud, and Public Cloud to support flexibility in installations
- ✓ Supports high availability, fail over and N+1 (more) redundancy architecture
- ✓ A web-based user-friendly browser interface for entering user queries and displaying query results
- ✓ Interfacing with OnVIF compliant IP camera(s) or reading from surveillance DVR
- ✓ State of the art computer vision and image processing algorithms optimized for GPU and CPU
- ✓ Scalable (easy to support any number of cameras)
- ✓ Customizable and configurable by client (Frame rate selection, camera management, ROI selection, etc.)
- ✓ Day/Night Recognition

## Hardware Requirements

- ✓ A built-in retention policy allows the user to specify a duration during which the data will remain on the database.
- ✓ Storage requirements are minimal compared to a typical VMS.
- ✓ A single database record requires approximately 150KB-200KB of storage based on the camera resolution and selected ROI.

## Hardware Requirements

- ✓ Supports wide range of cameras from 2 Mega Pixels up to 4K
- ✓ Lens 3 – 25 mm
- ✓ One Virtual Core / Camera
- ✓ 2 GB of memory / camera
- ✓ CPU 2.4 Giga Hertz
- ✓ Supports different types of GPU cards

## System Recommendations

- ✓ Pitch: -15,+15
- ✓ Roll: -180, +180
- ✓ Yaw: -15,+15
- ✓ Lightening : Normal light, can't be facing the camera or the person

---

AVIDBEAM TECHNOLOGIES



AvidBeam® Technologies, founded by former Intel professionals and headquartered in the Netherlands, delivers AI-powered video analytics built on deep learning, computer vision, GenAI and big data architectures. Its scalable, fault-tolerant platform emphasizes integration flexibility and hardware optimization. Certified by NVIDIA and Intel, AvidBeam integrates with leading VMS and IoT systems, and globally trusted by critical infrastructure, smart cities, governments, and enterprises including Fortune 500 companies.



[www.avidbeam.com](http://www.avidbeam.com)  
[info@avidbeam.com](mailto:info@avidbeam.com)

---