

AVIDBEAM TECHNOLOGIES

AvidGuard

Your Vigilant Guard



AvidGuard

Provides homeland security officers with intelligent information about people, vehicles, and objects.

- Intrusion Detection
- Loitering Detection
- Face Detection
- Left Object Detection
- Scene Change
- Crowd Detection
- Social Distancing Detection
- Face Mask Detection
- Trespassing Detection
- Anomaly & Action Detection
- Smoke/ Fire Detection
- Wrong Motion Detection
- Vehicle Count Detection
- Vehicles Classification
- Vehicles Lane Change
- Vehicle Incident Detection
- Slow/ Stopped Vehicles
- Traffic Light Violations
- Illegal Parking
- PPE Detection
- Fight Recognition
- Disconnected Camera Alert
- Real-Time Fast Video Search
- Create Watchlists



Technical Requirements

General System Specifications

- Integrated with different VMS (Milestone, Genetec) or deployed as a separate stand-alone application.
- Could be run On Premise, Private Cloud, and Public Cloud to support flexibility in installations
- Supports high availability, fail over and N+1 (more) redundancy architecture
- A web-based user friendly browser interface for entering user queries and displaying query results
- Interfacing with OnVIF compliant IP camera(s) or reading from surveillance DVR
- State of the art computer vision and image processing algorithms optimized for GPU and CPU
- Scalable (easy to support any number of cameras)
- Customizable and configurable by client (Frame rate selection, camera management, ROI selection, etc.)
- Day/Night Recognition

Hardware Requirements

- Supports wide range of cameras from 2 Mega Pixels up to 4K
- Lens 3 – 12 mm
- 2 GB of memory / camera
- CPU 2.4 Giga Hertz
- One Virtual Core / Camera
- Support different types of GPU cards

System Recommendations

- Pitch: -15,+15
- Roll: -180, +180
- Yaw: -15,+15
- Lightening : Normal light, can't be facing the camera or the person

AvidGuard in Action

Identify Suspicious Activity



✓ Detect Abandoned Baggage



✓ Detect Intrusion in Restricted Areas



✓ Fence Crossing Detection



✓ Loitering Detection



✓ Social Distancing Detection



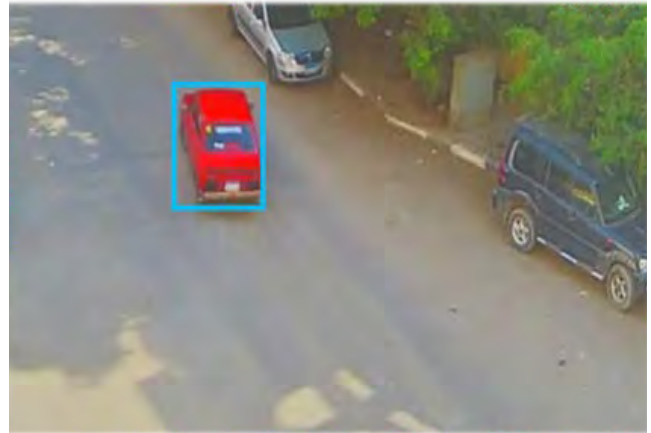
✓ Change in Scene Detection

AvidGuard in Action

Identify Traffic Violations



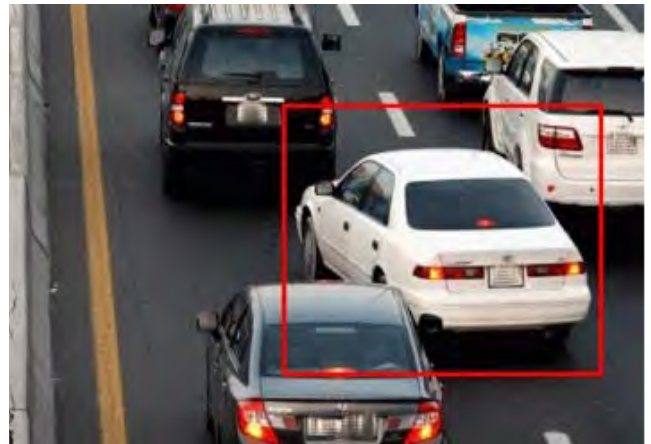
✓ Detect Illegal Parking



✓ Wrong Direction Detection



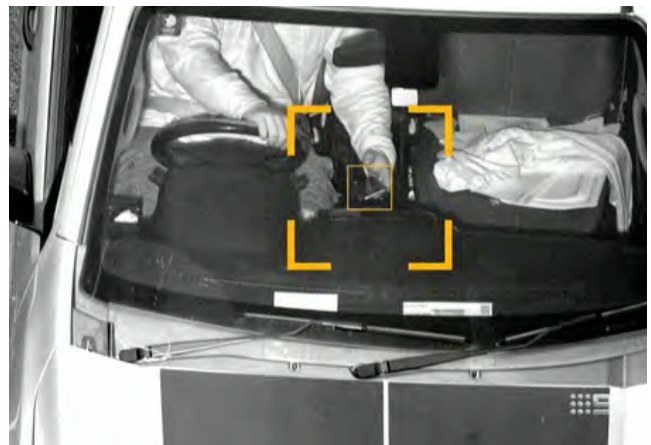
✓ Vehicle with No License Plate



✓ Illegal Vehicle Lane Switching



✓ Traffic Light Violation Detection



✓ Detect Phone Usage While Driving

AVIDBEAM TECHNOLOGIES



AvidBeam® is an AI video analytics company that pushes the boundaries of video processing capabilities with big data distributed architecture. Its expertise in computer vision, deep learning, visualization and neural networks enable AvidBeam® to offer scalable video analytics solutions for security, safety and business intelligence applications to its customers. AvidBeam team delivers video processing and analytics products cutting across various verticals and geographies including Smart Cities, Smart Retail, Transportation, Oil & Gas, Healthcare, Education, etc in the Middle East, Gulf and North America. Headquartered in the Netherlands with teams in the US, Egypt and Saudi Arabia



www.avidbeam.com
info@avidbeam.com