



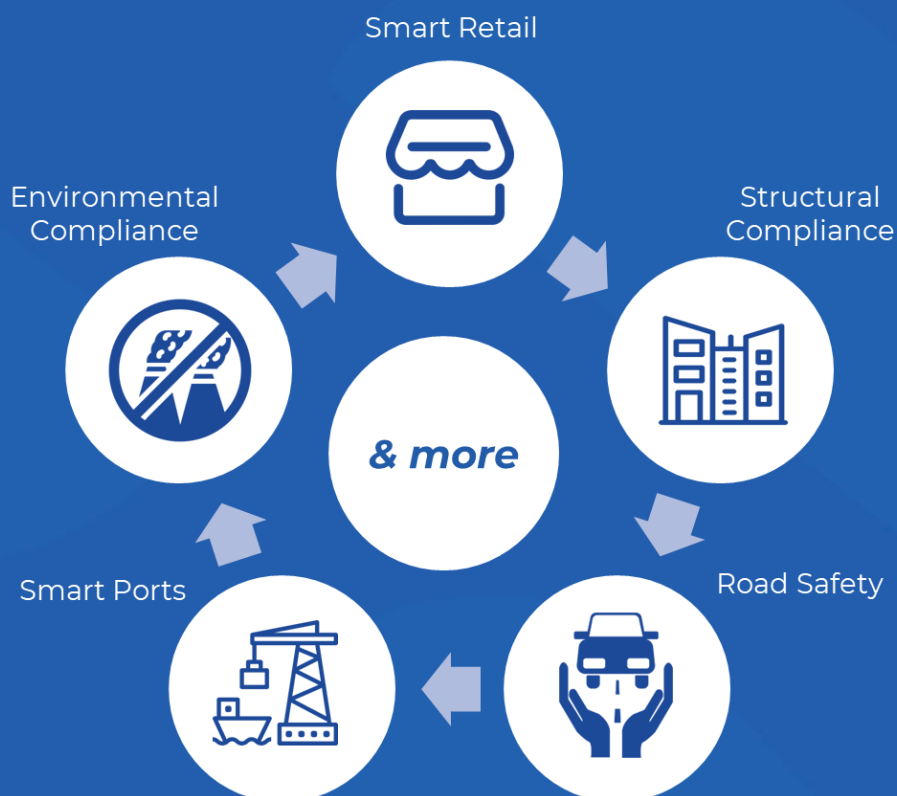
AvidGenAI

Turn Videos into Actions

AvidGenAI

Transforms video into natural language, enabling conversational search, real-time anomaly detection, and actionable operational insights.

AvidGenAI offers diverse use cases beyond a single domain. For example, its **Urban Safety** solution monitors infrastructure and hazards with real-time alerts. It also provides **Structural Compliance**, detecting building anomalies and risks throughout lifecycles. It also delivers **Retail Insights**, analyzing customer interactions with natural-language KPIs to optimize operations and marketing. Together, these illustrate—but do not limit—AvidGenAI’s broad capabilities **applicable to every sector**.



Why AvidBeam Video Analytics



One-stop Shop

Provides full video analytics portfolio for safety, security, intelligence.



Scalability

Synthesizes big data analytics supporting accurate real-time video surveillance.



Ease of Integration

Integrates with IoT platforms generating actionable data for decision making.



Flexibility

Provides diversified access locally or remotely via cloud solutions.



Professional Expertise

Team of professionals with extensive technical and business experience.



Customer Centric

Provides real-time analytics customized to each application need.

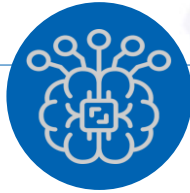


Our Dashboard – Competitive Edge



All-in-one

Manage video insights across facilities or cities using charts, reports, maps.



GenAI-enabled

Leverage GenAI through intuitive natural language interactions for seamless use.



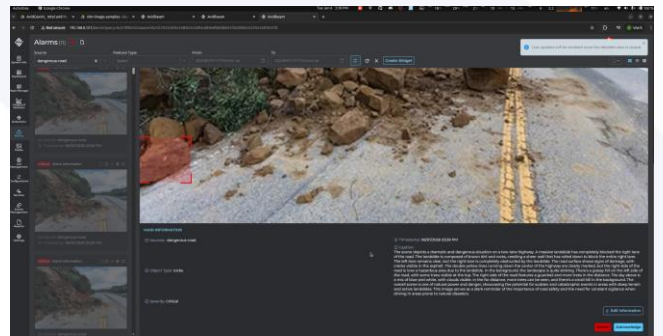
Intuitive

Experience user-friendly UI featuring reports, charts, widgets, and dashboards

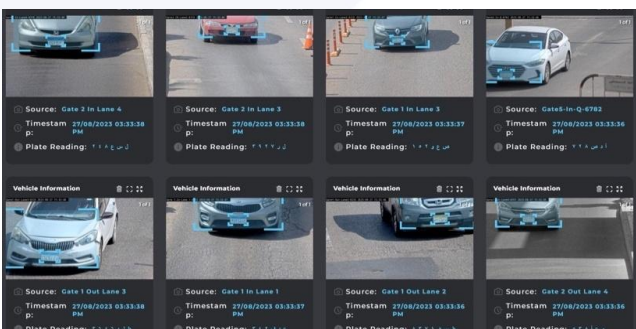
Dashboard Sample View



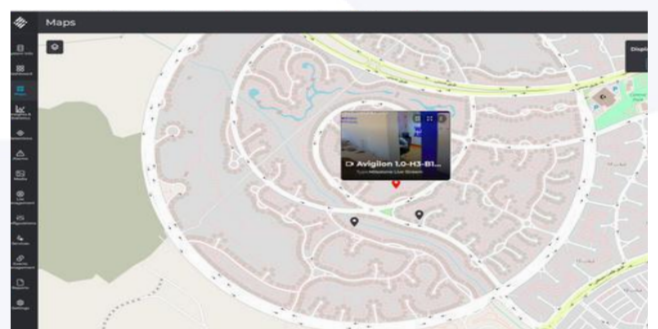
Live Dashboard View



VLM Alerts & Detections



License Plate Recognition



Map View

General Technical Requirements

General System Specifications

- ✓ Integrated with different VMS (Milestone, Genetec) or deployed as a separate stand-alone application.
- ✓ Could be run On Premise, Private Cloud, and Public Cloud to support flexibility in installations
- ✓ Supports high availability, fail over and N+1 (more) redundancy architecture
- ✓ A web-based user-friendly browser interface for entering user queries and displaying query results
- ✓ Interfacing with OnVIF compliant IP camera(s) or reading from surveillance DVR
- ✓ State of the art computer vision and image processing algorithms optimized for GPU and CPU
- ✓ Scalable (easy to support any number of cameras)
- ✓ Customizable and configurable by client (Frame rate selection, camera management, ROI selection, etc.)
- ✓ Day/Night Recognition

Hardware Requirements

- ✓ A built-in retention policy allows the user to specify a duration during which the data will remain on the database.
- ✓ Storage requirements are minimal compared to a typical VMS.
- ✓ A single database record requires approximately 150KB-200KB of storage based on the camera resolution and selected ROI.

Hardware Requirements

- ✓ Supports wide range of cameras from 2 Mega Pixels up to 4K
- ✓ Lens 3 – 25 mm
- ✓ One Virtual Core / Camera
- ✓ 2 GB of memory / camera
- ✓ CPU 2.4 Giga Hertz
- ✓ Supports different types of GPU cards

System Recommendations

- ✓ Pitch: -15,+15
- ✓ Roll: -180, +180
- ✓ Yaw: -15,+15
- ✓ Lightening : Normal light, can't be facing the camera or the person

AVIDBEAM TECHNOLOGIES



AvidBeam® Technologies, founded by former Intel professionals and headquartered in the Netherlands, delivers AI-powered video analytics built on deep learning, computer vision, GenAI and big data architectures. Its scalable, fault-tolerant platform emphasizes integration flexibility and hardware optimization. Certified by NVIDIA and Intel, AvidBeam integrates with leading VMS and IoT systems, and globally trusted by critical infrastructure, smart cities, governments, and enterprises including Fortune 500 companies.



www.avidbeam.com
info@avidbeam.com
