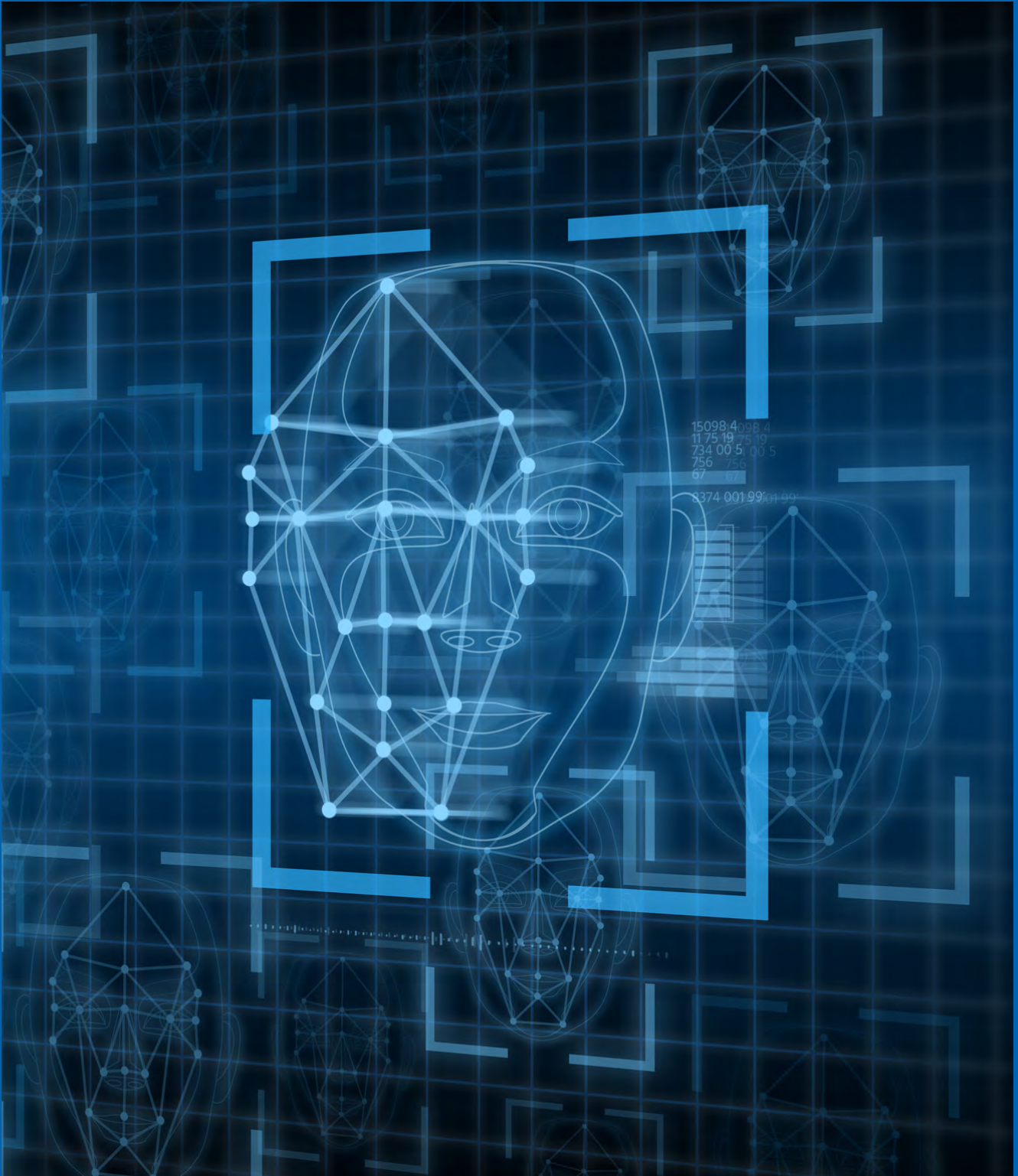


AVIDBEAM TECHNOLOGIES

AvidFace

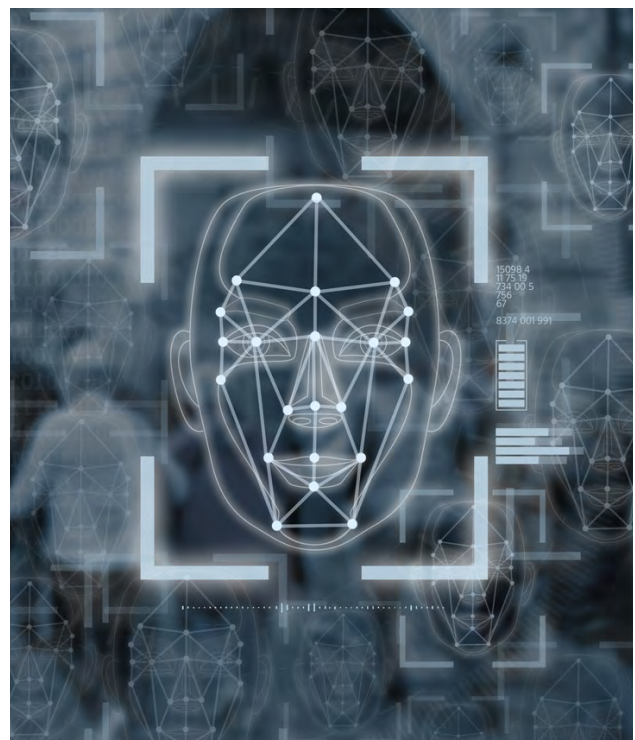
Know The Story Behind Every face



AvidFace

Scalable Real-Time Facial Recognition Solution

- Detect and Recognize Faces in Real-Time
- Reverse Image Search to Identify & Track Individuals
- Fast Search to Identify & Trace Suspects (1:1 & 1:Many)
- Identify Multiple Persons on The Go
- Trace Suspects & Identify Deny List Individuals
- Recognize VIPs at Hotels, Banks, and Events
- Protect Law Enforcement
- Enroll / Delete New Faces to/from the System Easily
- Custom Query & Report Generation
- Easily Integrated with Access Control and IoT Platforms
- Prevent Retail Crimes Through Blacklisted Shoplifters
- Diversified Set of Configurable Lists & Alarms



Technical Requirements

General System Specifications

- Integrated with different VMS (Milestone, Genetec) or deployed as a separate stand-alone application.
- Could be run On Premise, Private Cloud, and Public Cloud to support flexibility in installations
- Supports high availability, fail over and N+1 (more) redundancy architecture
- A web-based user friendly browser interface for entering user queries and displaying query results
- Interfacing with OnVIF compliant IP camera(s) or reading from surveillance DVR
- State of the art computer vision and image processing algorithms optimized for GPU and CPU
- Scalable (easy to support any number of cameras)
- Customizable and configurable by client (Frame rate selection, camera management, ROI selection, etc.)
- Day/Night Recognition

Hardware Requirements

- Supports wide range of cameras from 2 Mega Pixels up to 4K
- Lens 3 – 12 mm
- 2 GB of memory / camera
- CPU 2.4 Giga Hertz
- One Virtual Core / Camera
- Support different types of GPU cards

System Recommendations

- Pitch: -15,+15
- Roll: -180, +180
- Yaw: -15,+15
- Lightening : Normal light, can't be facing the camera or the person



Storage Requirements

Retention Policy

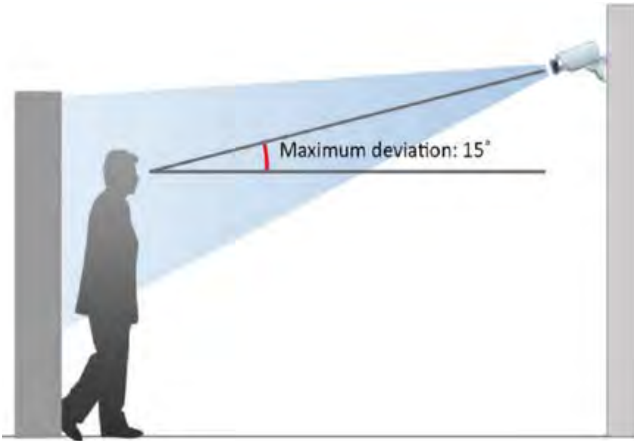
- AvidFace™ has a built-in retention policy which allows the user to specify a duration during which the data will not be removed from the database.
- The table below lists the estimated storage for a traffic load of 1000 faces/day.

Objects/ Day	Average Record / Object (KB)	Storage / Day (MB)	Storage / Month (GB)
1000	500 - 600	500 - 600	15 - 18

General Notes

- AvidFace™ storage requirements are very small compared to a typical VMS. Only images of detected cars and plates are stored.
- On the average for a single database record requires approximately 150KB-200KB of storage based on camera resolution and selected ROI.

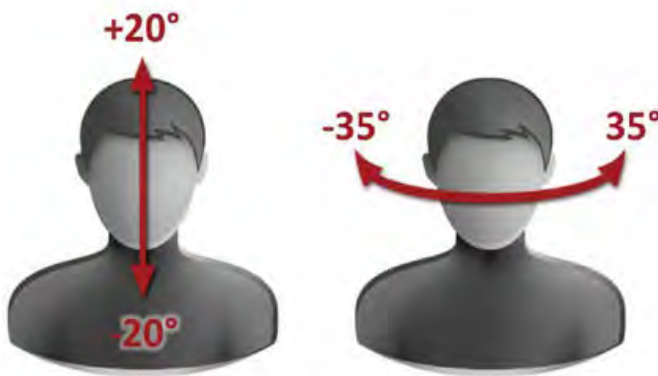
Camera Mounting Recommendations



For the deployment of AvidFace we require a 2 Megapixel camera running at a minimum frame rate of 15 frames per second.

In case of an indoor installation, the camera lens is required to be between 2.3 mm to 12 mm to provide flexibility at the deployment time. The camera setup is at 3 meters height attached to a ceiling or at the wall and 3-4 meters far away for the target subject. In case an outdoor alley or passage is being monitored, the camera lens can vary depending on the height and the distance to target. A similar deployment is required as in indoor scenario if possible.

Orientation & Lighting Recommendations



AvidFace requires that the target person is moving with walking speed, in case of fast movement the shutter speed and illumination needs to be adjusted accordingly. No occluding objects in front of the camera are allowed.

Same goes for reflecting surfaces that can produce false positive data. AvidFace requires uniformly distributed lighting conditions to function well. When measuring the light flux (light Intensity / squared meter area) near the target faces, the value should be greater than 50 lux to illuminate the face and show its details. For efficient faces detection and recognition, face should be captured in frontal direction with Max left/right deviation is +/- 35 and up/down deviation is +/- 20, The area of the detected faces should occupy an area of 112x112 pixels squared.

AVIDBEAM TECHNOLOGIES



AvidBeam® is an AI video analytics company that pushes the boundaries of video processing capabilities with big data distributed architecture. Its expertise in computer vision, deep learning, visualization and neural networks enable AvidBeam® to offer scalable video analytics solutions for security, safety and business intelligence applications to its customers. AvidBeam team delivers video processing and analytics products cutting across various verticals and geographies including Smart Cities, Smart Retail, Transportation, Oil & Gas, Healthcare, Education, etc in the Middle East, Gulf and North America. Headquartered in the Netherlands with teams in the US, Egypt and Saudi Arabia



www.avidbeam.com
info@avidbeam.com